

≡ S S ≡ N Z I A L E ≡

■ FLESSYA®

≡ S S ≡ N Z I ^ L ≡

forma e contenuto

forma ndc ontent

Ogni prodotto ha una sua **storia**, più o meno lunga, fatta di **ricerca e di sperimentazione**. Il design più vero non è altro che il frutto di un percorso di vita, un'essenza che raccoglie estetica e funzionalità **senza mai dimenticare l'uomo**. Non esiste design senza una narrazione poiché i **progetti** nascono da un bisogno ancestrale, che cambia e cresce con il tempo, giorno dopo giorno. Solo in questo modo lo spazio della casa può diventare **forma e contenuto** per raccontare la storia delle persone che la vivranno.

Each product has its own **story**, more or less long, made of **research and experimentation**. The design is nothing more true than the fruit of a way of life, an essence that brings together aesthetics and functionality **without forgetting the man**. There is no design without a narrative since the **projects** are born from ancestral need, that changes and grows with time, day after day. Only in this way the space of the house can become **form and content** to tell the history of the people who will live the house.

...a misura del vostro design

...to measure for your design

S-NZIALE è una linea nata per raccontare un equilibrio basato sulla sapiente **ricerca dei materiali più pregiati**, a misura del vostro design. **Ambienti sofisticati, creati attraverso giochi di luce di vetro e alluminio**, che si adattano agli ambienti esaltandoli con stile ed eleganza.

S-NZIALE is a line created to tell a balance based on wise **search of the finest materials**, to measure for your design. **Sophisticated environments, created through the play of light glass and aluminum**, which fit the rooms catches with style and elegance.



design unico infinite storie

unique design endless stories

S-NZIALE è una linea senza compromessi, grazie alla ricca gamma di rivestimenti e alle infinite possibilità e combinazioni, **sposando tutta la bellezza di un design unico alla totale personalizzazione del prodotto.**

La linea si compone di **vari modelli**, offrendo soluzioni di grande impatto estetico per ambienti che sanno raccontare qualcosa di più: **gusto, eleganza e cura dei dettagli**, racchiuse in un **design prezioso**, un vero e proprio patto di luce.

S-NZIALE racchiude ed esalta un ricercato risultato estetico e funzionale, grazie alla struttura di **vetro ed alluminio** che assicura il massimo della luminosità all'interno di ogni ambiente, garantendo ove necessario la giusta privacy ed eleganza per ambienti più sofisticati.

Ci piace pensare che **non esista una sola porta per ogni ambiente**, così come non ci sarà mai una sola storia per ognuno di noi.

S-NZIALE is a line without compromise, thanks to the wide range of coatings and the endless possibilities and combinations, **embracing the beauty of a unique design to the complete customization of the product.**

The line consists of **various models**, offering solutions of great visual impact for rooms which are able to tell something more: **taste, elegance and attention to detail**, enclosed in a **precious design**, a real deal of light.

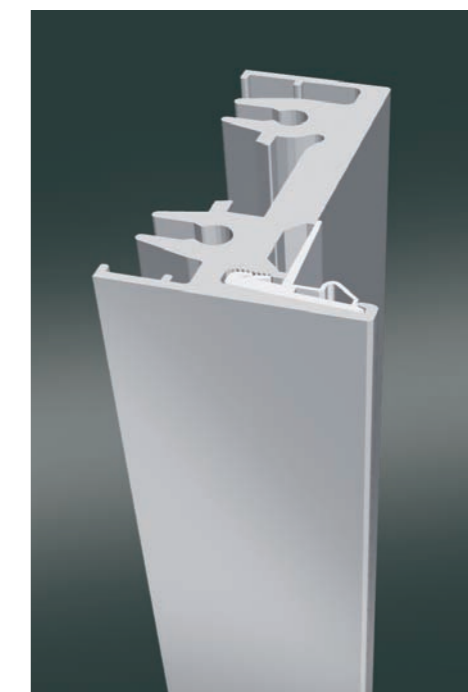
S-NZIALE encompasses and enhances a refined aesthetic and functional result, thanks to the structure of **glass and aluminum** which ensure maximum brightness in any environment, where necessary ensuring the right privacy and elegance to the most sophisticated environments.

We like to think that **it cannot be possible having only one door for a room**, as there will never be only one story for each of us.





minimale
minimale



TELAIO MINIMALE
MINIMALE FRAME

minimale

minimale

S00

telaio *frame*:
argento satinato *satín silver*
anta *door*:
vetro albero scavo
glass shaft excavation

Telaio montato in luce senza sormontare sulla parete per pareti finite senza controtelaio. Un profilo ridotto che disegna una minima cornice intorno all'anta in alluminio e vetro.

Frame mounted light without overcoming on the wall to finished walls without subframe. A low profile that draws a minimum frame around the leaf aluminum and glass.



particolare telaio Minimale
particular Minimale frame



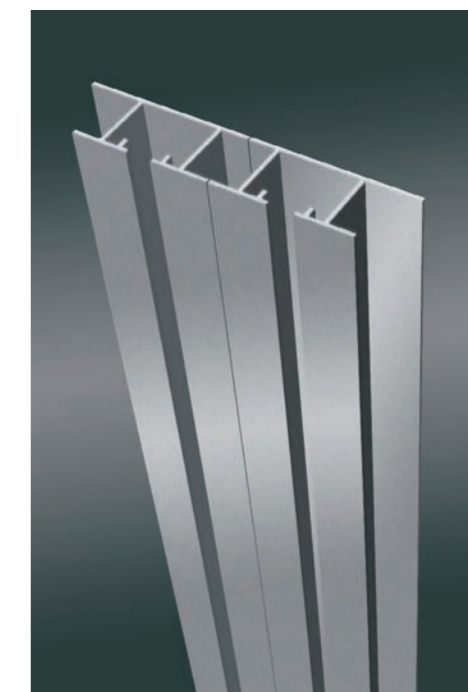
particolare vetro albero scavo
particular glass shaft excavation



S00	S00	S00	S00	SN05	SN00
telaio <i>frame</i> : alluminio grigio ral 7016 <i>gray aluminum ral 7016</i>	telaio <i>frame</i> : alluminio argento <i>silver aluminum</i>	telaio <i>frame</i> : alluminio bianco opaco <i>white matt aluminum</i>	telaio <i>frame</i> : alluminio acciaio brillante <i>aluminum bright steel</i>	telaio <i>frame</i> : alluminio argento <i>silver aluminum</i>	telaio <i>frame</i> : alluminio argento <i>silver aluminum</i>
anta <i>door</i> : vetro grigio acidato <i>grey etched glass</i>	anta <i>door</i> : vetro alluminio <i>aluminum glass</i>	anta <i>door</i> : vetro etnico 2 acidato <i>etched glass ethnic 2</i>	anta <i>door</i> : vetro laccato nero acidato <i>black glass etched</i>	anta <i>door</i> : frassino epoca ral 9016 <i>ash era ral 9016</i>	anta <i>door</i> : rovere grigio <i>grey oak</i>



scorrevole
incassato a soffitto
recessed ceiling sliding



BINARIO 2 VIE
INCASSATO A SOFFITTO
TRACK 2 WAY
RECESSED CEILING

scorrevole incassato a soffitto

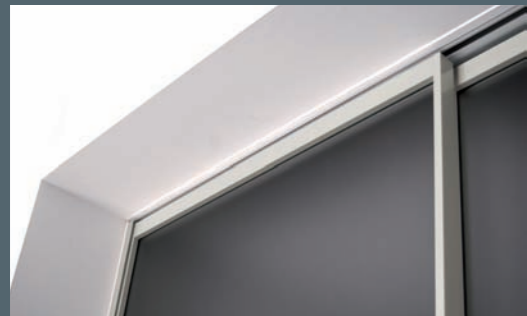
recessed ceiling sliding

S00

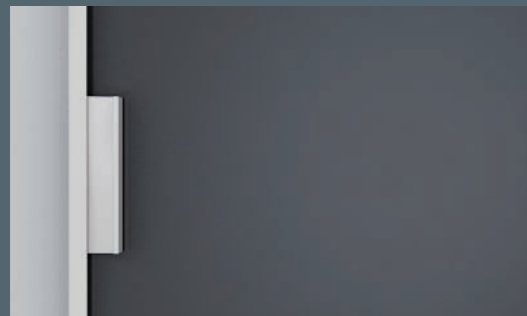
telaio *frame:*
bianco opaco *matt white*
anta *door:*
vetro grigio trasparente
transparent gray glass

Scorrevole a 2 vie parallele con binario incassato al controsoffitto per eliminare completamente ogni accessorio oltre alle sole ante scorrevoli.

Sliding rail fitted with 2-way parallel to the ceiling to eliminate completely any accessory in addition to the sun sliding doors.



particolare binario 2 vie incassato a soffitto
particular binary recessed ceiling 2-way



particolare vetro grigio trasparente
particularly transparent gray glass

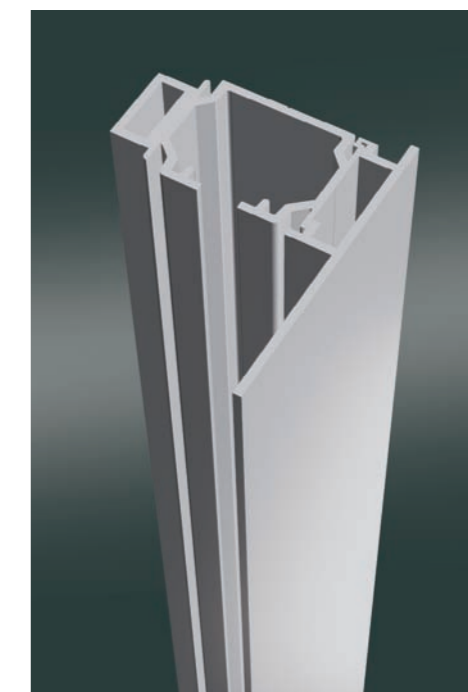


S00	S00	S00	S00	S00	S00
telaio <i>frame:</i> alluminio argento <i>silver aluminum</i>	telaio <i>frame:</i> alluminio nero <i>aluminum black</i>	telaio <i>frame:</i> alluminio acciaio brillante <i>aluminum bright steel</i>	telaio <i>frame:</i> alluminio nero <i>black aluminum</i>	telaio <i>frame:</i> alluminio bianco opaco <i>white matt aluminum</i>	telaio <i>frame:</i> alluminio bronzo <i>aluminum bronze</i>
anta <i>door:</i> vetro pompeii trasparente <i>clear glass pompeii</i>	anta <i>door:</i> vetro serie <i>series glass</i>	anta <i>door:</i> vetro grigio trasparente <i>transparent gray glass</i>	anta <i>door:</i> vetro extra chiaro acidato <i>extra light acid-etched glass</i>	anta <i>door:</i> vetro laccato bianco <i>white glass</i>	anta <i>door:</i> vetro ellittica acidato <i>elliptical glass etched</i>



scorrevole esterno

external sliding



BINARIO SINGOLO A PARETE
SINGLE WALL TRACK

scorrevole esterno

sliding outside

S00

telaio *telaio:*

bronzo *bronze*

anta *anta:*

vetro segni sabbia acidato

sand etched glass signs

Scorrimento ad una o più ante parallelo al muro per chiusure di ogni dimensione.

Scroll to one or more wings parallel to the wall for closure of all sizes.



particolare mantovana alluminio
particularly aluminum bargeboard



particolare vetro segni sabbia acidato
particularly sand etched glass signs

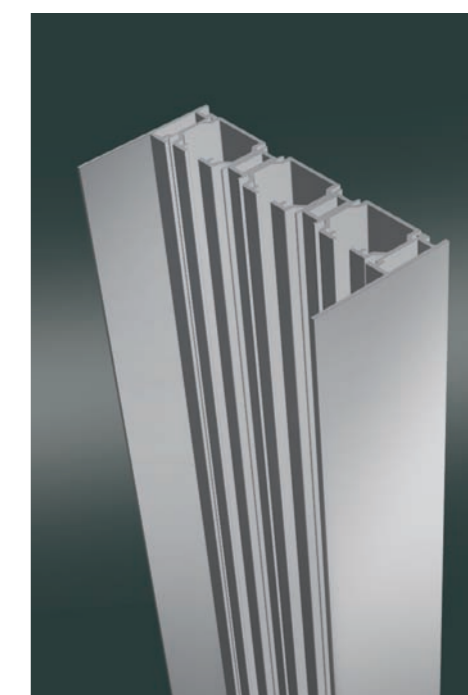


S00	S00	S00	S00	S00	S00
telaio <i>frame:</i> alluminio argento <i>silver aluminum</i>	telaio <i>frame:</i> alluminio testa di moro <i>dark brown aluminum</i>	telaio <i>frame:</i> alluminio avorio opaco <i>ivory matt aluminum</i>	telaio <i>frame:</i> alluminio bianco opaco <i>white matt aluminum</i>	telaio <i>frame:</i> alluminio nero <i>black aluminum</i>	telaio <i>frame:</i> alluminio acciaio brillante <i>aluminum bright steel</i>
anta <i>door:</i> vetro etnico 1 acidato <i>etched glass ethnic 1</i>	anta <i>door:</i> vetro klimt scavo <i>glass klimt excavation</i>	anta <i>door:</i> vetro cerchio acidato <i>circle etched glass</i>	anta <i>door:</i> vetro segno sabbia acidato <i>sign glass sand etched</i>	anta <i>door:</i> vetro fiori trasparente <i>transparent glass flowers</i>	anta <i>door:</i> vetro laccato rosso acidato <i>red glass etched</i>



scorrevole con mantovana a soffitto

sliding doors with ceiling bargeboard



BINARIO A TRE VIE CON
MANTOVANA A SOFFITTO
THREE WAY TRACK WITH
CEILING BARGEBOARD

scorrevole con mantovana

sliding doors with valance

S02

telaio *frame:*

testa di moro ossidato

dark brown oxidised

anta *door:*

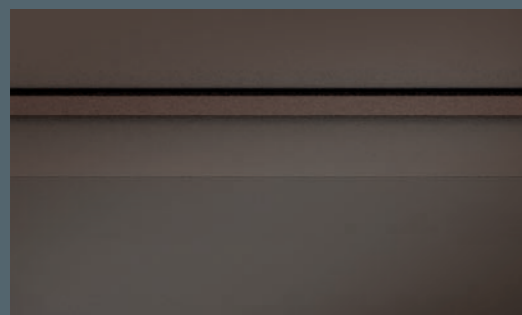
vetro bronzo satinato *bronze satin glass*

Scorrimento ad una o più ante in luce al foro muro per pareti finite senza controtelaio. Possibilità di inserire montanti di arrivo per alloggiare le ante.

Scroll to one or more doors with the hole wall to finished walls without subframe. Ability to insert studs to accommodate the arrival doors.



particolare mantovana 3 ante
particular bargeboard with 3 doors



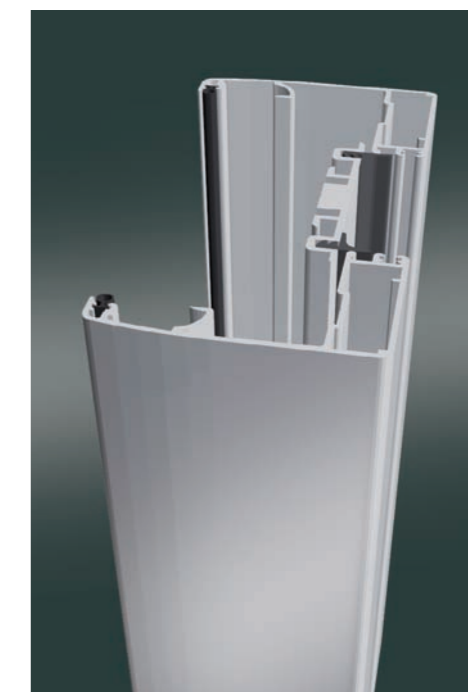
particolare vetro bronzo con listelli orizzontali
particular bronze glass with horizontal slats



S00	S00	S00	S00	S00	S00
telaio <i>frame:</i> alluminio argento <i>silver aluminum</i>	telaio <i>frame:</i> alluminio acciaio brillante <i>aluminum bright steel</i>	telaio <i>frame:</i> alluminio testa di moro <i>dark brown aluminum</i>	telaio <i>frame:</i> alluminio nero <i>black aluminum</i>	telaio <i>frame:</i> alluminio bianco opaco <i>white matt aluminum</i>	telaio <i>frame:</i> alluminio argento <i>silver aluminum</i>
anta <i>door:</i> vetro fiori acidato <i>etched glass flowers</i>	anta <i>door:</i> vetro extra chiaro acidato <i>extra clear glass etched</i>	anta <i>door:</i> vetro bronzo acidato <i>bronze etched glass</i>	anta <i>door:</i> vetro pompeii acidato <i>etched glass pompeii</i>	anta <i>door:</i> vetro trasparente arancio <i>orange transparent glass</i>	anta <i>door:</i> vetro africa acidato <i>africa etched glass</i>



scorrevole a scomparsa
retractable sliding frame



TELAIO TRATTO SCORREVOLE
A SCOMPARSA
RETRACTABLE SLIDING FRAME

scorrevole a scomparsa

retractable sliding frame

S00

telaio *frame*:
acciaio brillante *bright steel*
anta *door*:
vetro modello messico acidato
glass modello messico etched

Porta scorrevole a scomparsa interno muro per ottimizzare gli spazi a disposizione sia anta singola che doppia contrapposta, disponibile con telaio Tratto e Globo.

Sliding door inside the wall to maximize the space available to both single and double leaf opposed, available framed Stroke and Globe.



particolare telaio scorrevole
particular sliding frame



particolare vetro modello messico acidato
particular glass etched pattern messico



S00	S00	S00	S00	SN05	SN00
telaio <i>frame</i> : alluminio argento <i>silver aluminum</i>	telaio <i>frame</i> : alluminio bronzo <i>aluminum bronze</i>	telaio <i>frame</i> : alluminio testa di moro <i>dark brown aluminum</i>	telaio <i>frame</i> : alluminio bianco opaco <i>white matt aluminum</i>	telaio <i>frame</i> : alluminio argento <i>silver aluminum</i>	telaio <i>frame</i> : alluminio acciaio brillante <i>aluminum bright steel</i>
anta <i>door</i> : vetro africa trasparente <i>africa transparent glass</i>	anta <i>door</i> : vetro klimt sabbia acidato <i>klimt sand etched glass</i>	anta <i>door</i> : vetro messico acidato <i>etched glass messico</i>	anta <i>door</i> : vetro lettere 2 acidato <i>letters 2 etched glass</i>	anta <i>door</i> : rovere sbiancato <i>white oak</i>	anta <i>door</i> : laccato bianco lucido <i>lacquered white glossy</i>



battente
hinged door



TELAIO TRATTO
A BATTENTE
SECTIONED FRAME
HINGED DOOR

battente

hinged door

SN05

telaio *frame:*

nero ossidato *black oxidized*

anta *door:*

frassino poro aperto laccato nero ral 9005

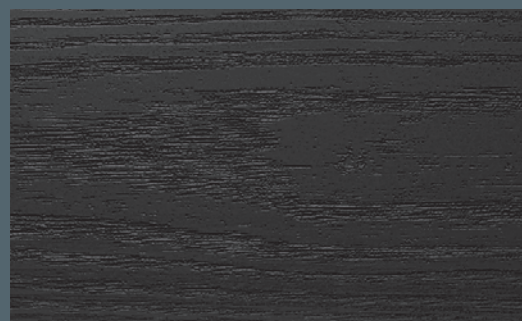
ash lacquered open pore black ral 9005

Proposta nella versione con telaio Tratto, dalle linee semplici e pulite, è disponibile anche nella versione Globo, più morbida e sinuosa.

Proposed in the frame version Tratto, with simple lines and clean cut also available in the Globo, softer and more curvaceous.



particolare telaio Tratto
particular Tratto frame



particolare anta frassino laccato poro aperto
particular door open pore lacquered ash



SN05	SN05	SN00	S00	S00	S00
telaio <i>frame:</i> alluminio bronzo <i>aluminum bronze</i>	telaio <i>frame:</i> alluminio argento <i>silver aluminum</i>	telaio <i>frame:</i> alluminio acciaio brillante <i>aluminum bright steel</i>	telaio <i>frame:</i> alluminio nero <i>black aluminum</i>	telaio <i>frame:</i> alluminio bianco opaco <i>white matt aluminum</i>	telaio <i>frame:</i> alluminio testa di moro <i>dark brown aluminum</i>
anta <i>door:</i> frassino laccato poro aperto ral 1013 <i>lacquered ash open pore ral 1013</i>	anta <i>door:</i> frassino epoca grigio 0238 <i>vintage 0238 ash grey</i>	anta <i>door:</i> laccato bianco <i>white lacquered</i>	anta <i>door:</i> vetro grigio trasparente <i>transparent gray glass</i>	anta <i>door:</i> vetro viaggio scavo <i>excavation glass travel</i>	anta <i>door:</i> vetro bronzo trasparente <i>bronze glass transparent</i>

maniglie per porte

handles for doors

Maniglie per porte a battente *Handles for hinged doors*



Equinox
Equinox



Nottolino e cilindro yale
Yale pawl and cylinder



Minimal
Minimal



Nottolino e cilindro yale
Yale pawl and cylinder



Nemesis
Nemesis



Nottolino e cilindro yale
Yale pawl and cylinder



Quadra, disponibile anche cromo satinata
Quadra, available chrome satin-finished plate



Nottolino e cilindro yale
Yale pawl and cylinder

Maniglie per porte scorrevoli *Handles for sliding doors*



art. KSIO6VQ
maniglia quadrata inox satinato 64X64 mm
art. KSIO6VQ
64x64 mm square handle satin stainless



art. KSIO6VR
maniglia rettangolare inox satinato 150X64 mm
art. KSIO6VR
150x64 mm rectangular handle satin stainless



art. KSCR06VC
maniglia argento a C h 172 e 332 mm
art. KSCR06VC
silver handle C h 172 and 332 mm



art. KS06VL
maniglia in tinta a L h 140, 500 e 1000 mm
art. KS06VL
handle stain L h 140, 500 and 1000 mm



art. KSCR02V
serratura argenteo con nottolino (vista lato interno)
art. KSCR02V
silver lock with pawl (view inside)

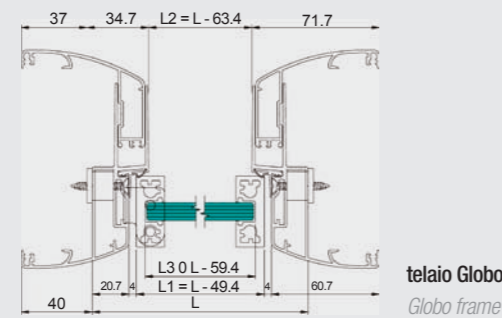
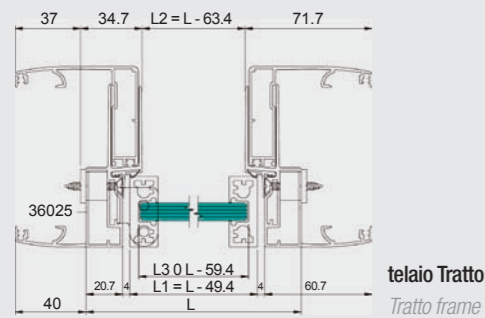


art. KSCR02V
serratura argenteo con nottolino (vista lato esterno)
art. KSCR02V
silver lock with pawl (viewed from the exterior)

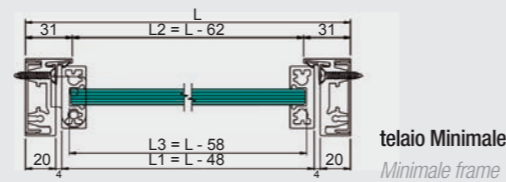
disegni tecnici

technical data

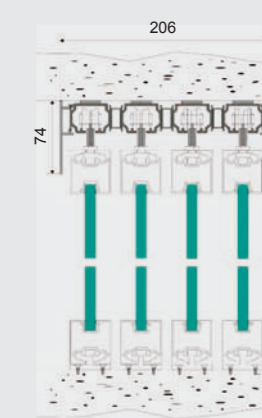
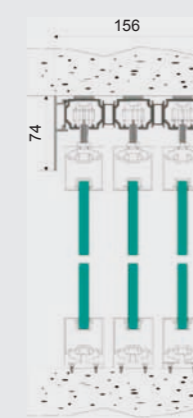
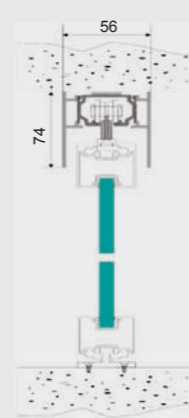
Battente Leaf



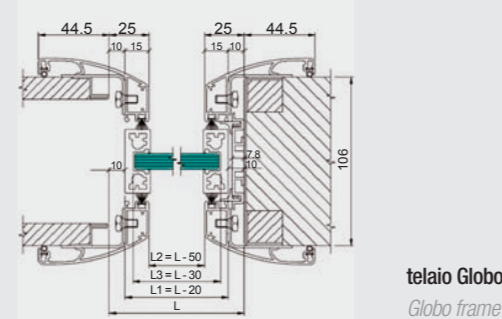
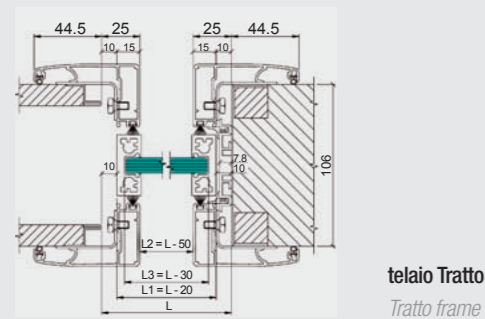
Telaio minimale Minimale frame



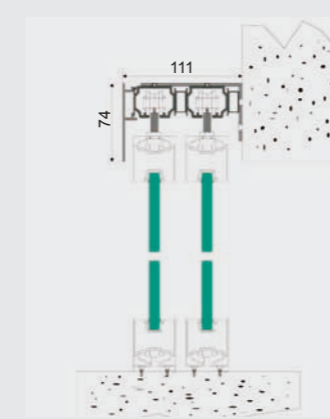
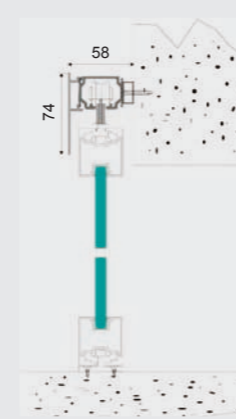
Scorrevole esterno a soffitto External sliding ceiling



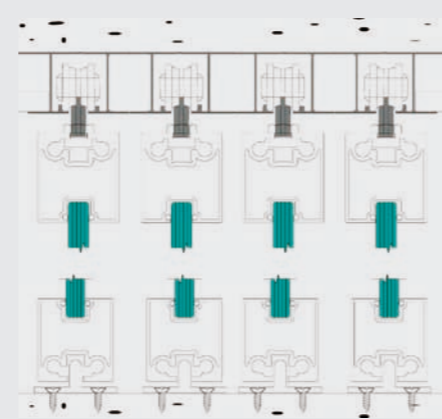
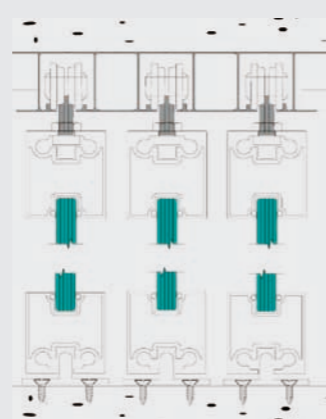
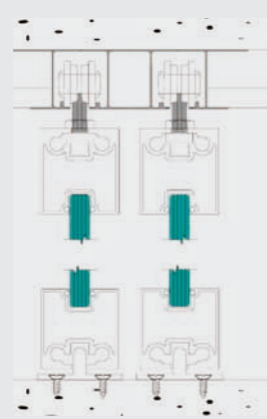
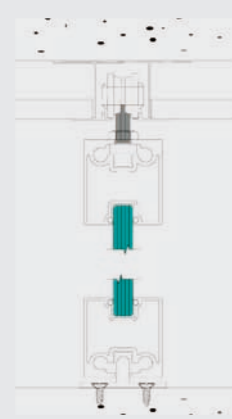
Scorrevole a scomparsa Concealed sliding



Scorrevole esterno a parete External sliding wall



Scorrevole affogato a soffitto Sliding drowned ceiling



1 anta mobile.
Fissaggio affogato a soffitto
1 movable door. Fixing ceiling drowned

2 ante mobili.
Fissaggio affogato a soffitto
2 movable doors. Fixing ceiling drowned

3 ante mobili.
Fissaggio affogato a soffitto
3 movable doors. Fixing ceiling drowned

4 ante mobili.
Fissaggio affogato a soffitto
4 movable doors. Fixing ceiling drowned

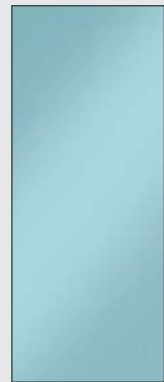
1 anta mobile. Fissaggio a parete
1 movable door. Wall mounting

2 ante mobili. Fissaggio a parete
2 movable doors. Wall mounting

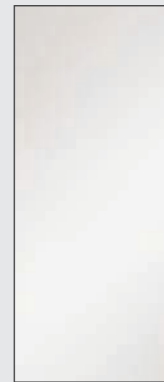
basi

bases

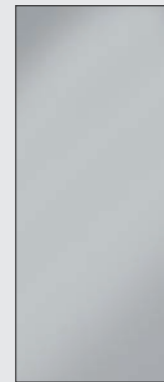
Tipi di vetro *Types of glass*



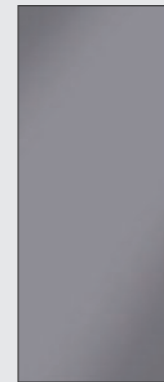
trasparente
transparent



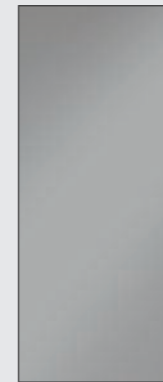
acidato
etched



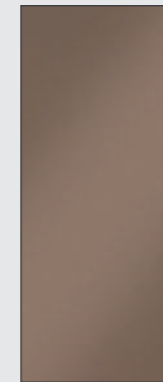
acidato extra chiaro
etched extra light



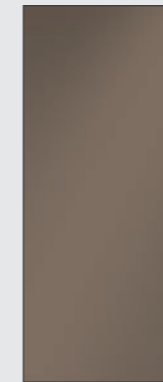
grigio trasparente
transparent gray



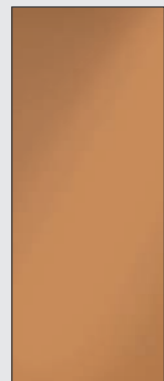
grigio acidato
gray etched



bronzo trasparente
transparent bronze



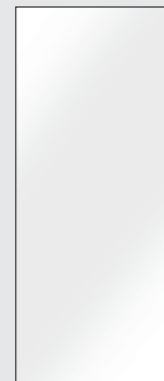
bronzo acidato
bronze etched



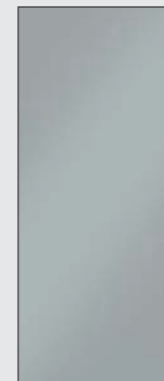
colorato lucido arancio
glossy colored orange



colorato acidato rosso
colored etched red



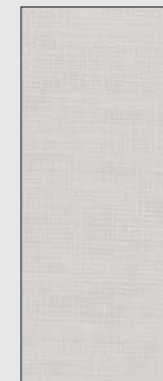
laccato bianco lucido
glossy white lacquered



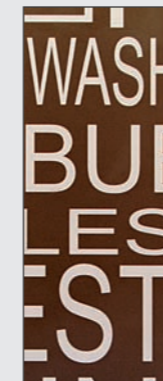
laccato alluminio argento acidato
lacquered aluminum silver etched



laccato nero acidato
black satin lacquer

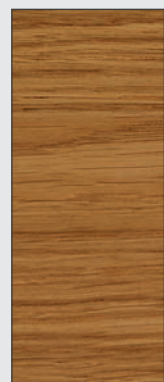


tessuto bianco
white fabric

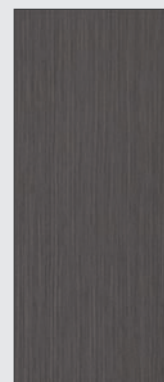


stampa digitale
digital printing

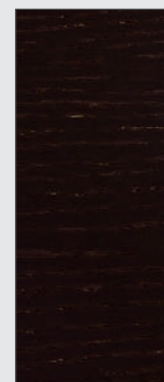
Colori per legno *Wood colors*



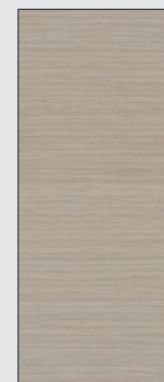
rovere essenza
oak wood



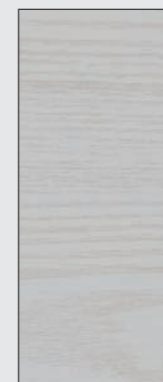
rovere grigio
grey oak



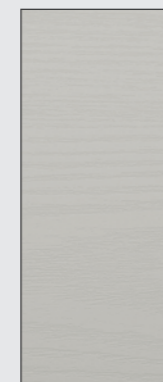
rovere caffè
oak coffee



rovere sbiancato
bleached oak

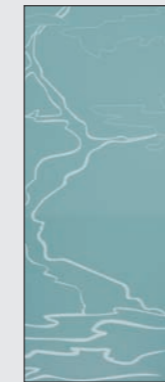


epoca
time

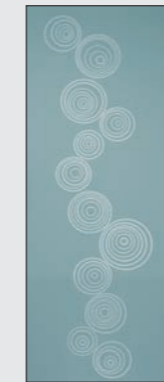


poro aperto
open pore

Modelli di vetro *Models of glass*



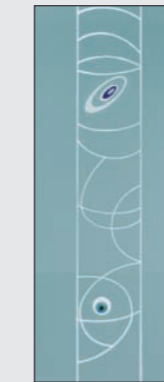
albero scavo
shaft excavation



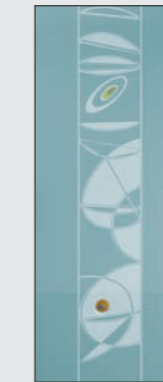
africa
africa



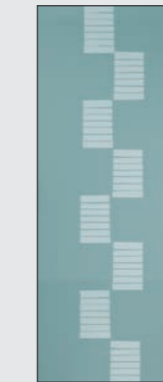
cerchio
circle



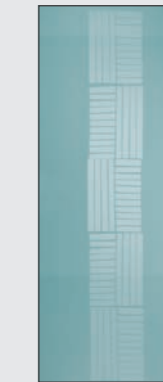
ellisse
ellipse



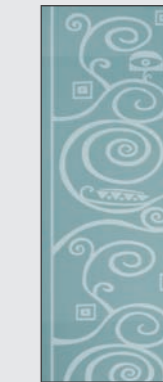
ellittica
elliptic



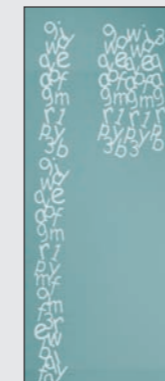
etnico 1
ethnic 1



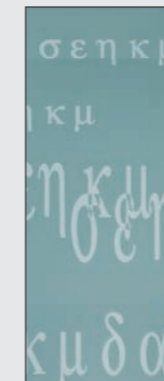
etnico 2
ethnic 2



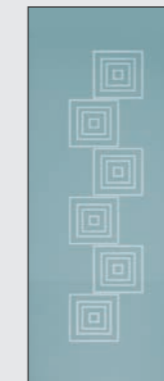
klimt
klimt



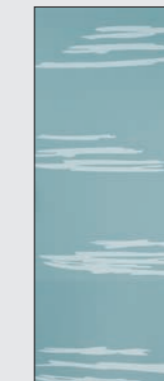
lettere 1
letters 1



lettere 2
letters 2



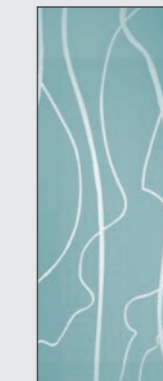
messico
messico



segno sabbia
sign sand



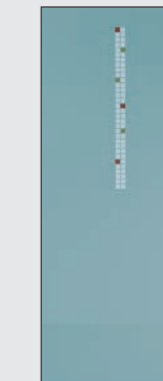
serie
series



viaggio scavo
travel excavation

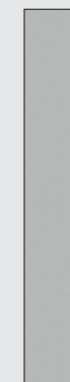


fiori
flowers



pompei
pompei

Colori alluminio *Aluminium colors*



argento
silver



bianco opaco
matt white



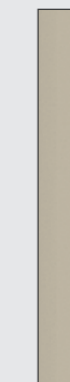
nero ossidato
black oxidized



acciaio brillante
bright steel



testa di moro ossidato
dark brown oxidised



bronzo ossidato
oxidized bronze



mille modi per dire porta

Flessya srl

Via dell'artigianato 13
60030 Monte Roberto An
tel 0731.70.74.11
fax 0731.70.74.70
PI 02287520429

www.flessya.it

commerciale@flessya.it
info@flessya.it
amministrazione@flessya.it

Paolo Pantaleoni

area commerciale - *sales department*
paolo.pantaleoni@flessya.it
int 0731.70.74.25

Francesco Fioretti

area commerciale - *sales department*
francesco.fioretti@flessya.it
int 0731.70.74.27

Marco Marchegiani

area amministrativa - *account department*
marco.marchegiani@flessya.it
int 0731.70.74.22

Paolo Perticaroli

area produzione - *production department*
paolo.perticaroli@flessya.it
int 0731.70.74.23

Federica Brunori

area commerciale - *sales department*
federica.brunori@flessya.it
int 0731.70.74.26

Rina Cimarelli

area amministrativa - *account department*
rina.cimarelli@flessya.it
int 0731.70.74.24

Diego Bonci

area acquisti - *purchasing department*
diego.bonci@flessya.it
int 0731.70.74.28

Ireneo Perticaroli

amministratore unico - *sole administrator*
ireneo.perticaroli@flessya.it
int 0731.70.74.21

